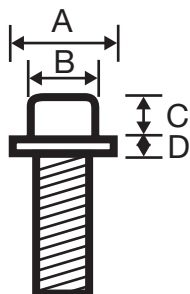


Tri-Head - Metric Machine Screws



Dimensions (mm)



DIMENSION	A	B	C	D
LENGTH				
20mm	13.7	8.5	6.5	1.5
30mm	13.7	8.5	6.5	1.5
40mm	13.7	8.5	6.5	1.5
50mm	17.0	8.5	6.0	2.0

Material and Finish

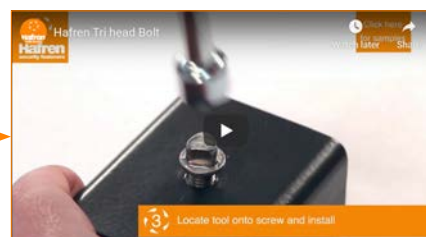
Material: A2 Stainless Steel
Heat Treatment: None
Finish: Self Colour

Size & Part Numbers

LENGTH	20mm	30mm	40mm	50mm	DRIVER SIZE
GAUGE					
M8	TRIM0820	TRIM0830	TRIM0840	TRIM0850	TRI-8

Additional Information

Patented Product: Hafren Fasteners
Installation: Tri-Head - see video
Removal: 1-Way Removable Screw



Every effort has been made to ensure the accuracy of information provided in this catalogue. Hafren Fasteners cannot warrant the information however, expressly or implied, and any liability arising from it is expressly excluded. Customers must satisfy themselves as to the suitability of products and the technical information relating to them, and it is recommended that you conduct your own tests to establish suitability. All sizes shown are in mm without min and max tolerances and are guide sizes. Hafren Fasteners reserve the right to change/alter sizes without notice. This does not effect your statutory rights.