

Round Rivet Bushes

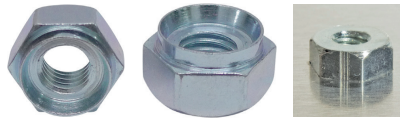


Rivet bushes have a thin spigot which is peened over to securely lock the bush into the parent material; the serrations give additional turning resistance.

- STEEL
- A4 STAINLESS STEEL
- A2 STAINLESS STEEL
- ALUMINIUM ALLOY

Thread Size	Hole Diameter	Spigot Diameter (max)	Body Diameter	Body Height
M3	5.54	5.54	7.92	3.17
M3.5	6.73	6.73	9.52	3.17
M4	6.73	6.73	9.52	3.17
M5	7.92	7.92	11.1	3.81
M6	9.52	9.52	12.7	5.08
M8	12.7	12.7	15.87	6.35
M10	15.87	15.87	19.05	7.62
M12	19.05	19.05	25.4	10.16

Hexagon Rivet Bushes



The undercut points of the hexagon body give additional turning resistance. Rivet bushes can be installed using either a hammer or a press.

- STEEL
- A4 STAINLESS STEEL
- A2 STAINLESS STEEL

Thread Size	Hole Diameter	Spigot Diameter (max)	Body Across Flats	Body Height
M3	5.54	5.54	7.92	3.17
M4	6.73	6.73	7.92	3.17
M5	7.92	7.92	9.52	3.81
M6	9.52	9.52	11.1	5.08
M8	12.7	12.7	14.27	6.35
M10	15.87	15.87	19.05	7.62
M12	19.05	19.05	22.22	10.16

Mini Rivet Bushes



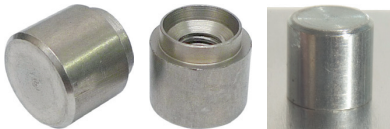
Mini rivet bushes work in the same way as the round type but have smaller body dimensions for applications where space is restricted.

- STEEL
- A4 STAINLESS STEEL
- A2 STAINLESS STEEL

Thread Size	Hole Diameter	Spigot Diameter (max)	Body Diameter	Body Height
M2	3.5	3.5	5	2.3
M2.5	4.19	4.19	5.5	2.8
M3	4.19	4.19	5.5	2.8
M4	5.41	5.41	7	3.2
M5	6.4	6.4	8.5	3.8
M6	7.7	7.7	10	5.1

Gauge Size	8G	10G	12G	14G	16G	18G	20G	22G
Sheet Thickness in mm	4.0	3.0	2.5	2.0	1.5	1.2	1.0	0.8

Tank Bushes



Tank bushes are a 'sealed end' version of the standard round rivet bush and have the same body and spigot diameter. Typically used in applications where ingress into the product must be prevented.

- STEEL
- A4 STAINLESS STEEL
- A2 STAINLESS STEEL

Thread Size	Hole Diameter	Spigot Diameter (max)	Body Diameter	Body Height
M3	5.54	5.54	7.92	3.17
M3.5	6.73	6.73	9.52	3.17
M4	6.73	6.73	9.52	3.17
M4	6.73	6.73	9.52	3.17
M4	6.73	6.73	9.52	3.17
M3.5	6.73	6.73	9.52	3.17
M3	5.54	5.54	7.92	3.17

Rivet Bush Standoffs



Rivet bush standoffs are a 'longer body' version of either MINI or ROUND pattern rivet bushes. Some standard sizes are available and other variants can be made to order.

- STEEL
- A4 STAINLESS STEEL
- A2 STAINLESS STEEL

Thread Size	ROUND Hole Diameter	ROUND Body Diameter	MINI Hole Diameter	MINI Body Diameter
M2			3.5	5
M2.5			4.19	5.5
M3	5.54	7.92	4.19	5.5
M4	6.73	9.52	5.41	7
M5	7.92	11.1	6.4	8.5
M6	9.52	12.7	7.7	10
M8	12.7	15.87	9.7	12

Special Rivet Bushes



SPECIAL THREADS
Fine pitch, UNF & UNC, BSP & more



CLEAR HOLE BUSHES
Permanently attached spacer or guide bush



SPECIAL BODY DIMENSIONS
Bespoke body diameter or length



MINI TANK BUSHES
Where space is at a premium

Where applications require a solution that is not standard, we can manufacture a special part. MOQ from 500 pcs with fast delivery.

- STEEL
- A4 STAINLESS STEEL
- A2 STAINLESS STEEL
- ALUMINIUM ALLOY
- BRASS

Gauge Size	8G	10G	12G	14G	16G	18G	20G	22G
Sheet Thickness in mm	4.0	3.0	2.5	2.0	1.5	1.2	1.0	0.8