

**Aluminium / Steel Type
DOME HEAD**



- Din Standard
- ALMg 2.5/3.5 Body
- Steel Zinc Cr3 Mandrel

**Steel / Steel Type
DOME HEAD**



- Din Standard
- Steel Zinc Cr3 Body
- Steel Zinc Cr3 Mandrel

**Stainless / Stainless Type
DOME HEAD**



- Din Standard
- A2 Stainless Steel Body
- Grooved A2 Stainless Steel Mandrel

**Aluminium / Steel Type
COUNTERSUNK HEAD**



- Din Standard
- ALMg 2.5/3.5 Body
- Steel Zinc Cr3 Mandrel

**Steel / Steel Type
COUNTERSUNK HEAD**



- Din Standard
- Steel Zinc Cr3 Body
- Steel Zinc Cr3 Mandrel

**Stainless / Stainless
COUNTERSUNK HEAD**



- Din Standard
- A2 Stainless Steel Body
- Grooved A2 Stainless Steel Mandrel

**Aluminium / Steel Type
LARGE HEAD**



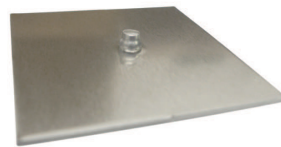
- Din Standard
- ALMg 2.5/3.5 Body
- Steel Zinc Cr3 Mandrel



**Aluminium / Steel Type
SEALED BODY TYPE**



- Din Standard
- ALMg 2.5/3.5 Body
- Steel Phospated Mandrel



**Aluminium / Steel Type
MULTIGRIP TYPE**



- Wider Grip Range
- Superior hole fill & clamping performance

